



SANYO

Model **ICC-0081**

ELECTRONIC MINI CALCULATOR

DISASSEMBLY INSTRUCTION

**DISASSEMBLY OF MACHINE
FOR
ICC—0081**

Order of operation Explanation

A. DISASSEMBLY OF COVER ASSEMBLY

1. Remove the 2 rubber feet ① and remove the 2 Papers shield ② .
2. Remove the 4 screws ③ and open the cabinet ④ (Fig-1) .

B. REMOVAL OF PRINTED CIRCUIT BOARD

1. Remove the 2 screws ⑤ , then pull the slide switch ⑥ up from the fixture plate ⑦ .
2. Remove the 2 screws ⑧ and remove the printed circuit board (P.C.B.) ⑨ , paper shield ⑩ , insulating plate ⑪ , display panel ⑫ , fixture plate of slide switch ⑦ and ground terminal ⑬ from base ⑭ .
3. Pull the 44 pin connector ⑮ .
4. Remove the 2 screws ⑯ and remove power transformer ⑰ (Fig-2) .

C. DISASSEMBLY OF KEY BOARD

1. Remove the 2 screws ⑱ and then remove the 2 fixture plates ⑲ .
2. Remove the 4 screws ⑳ and lift up the key board ㉑ .
3. Remove the 2 screws ㉒ and remove the seesaw switch ㉓ .
4. Remove the 2 screws ㉔ and remove the rotary switch ㉕ (Fig-3) .

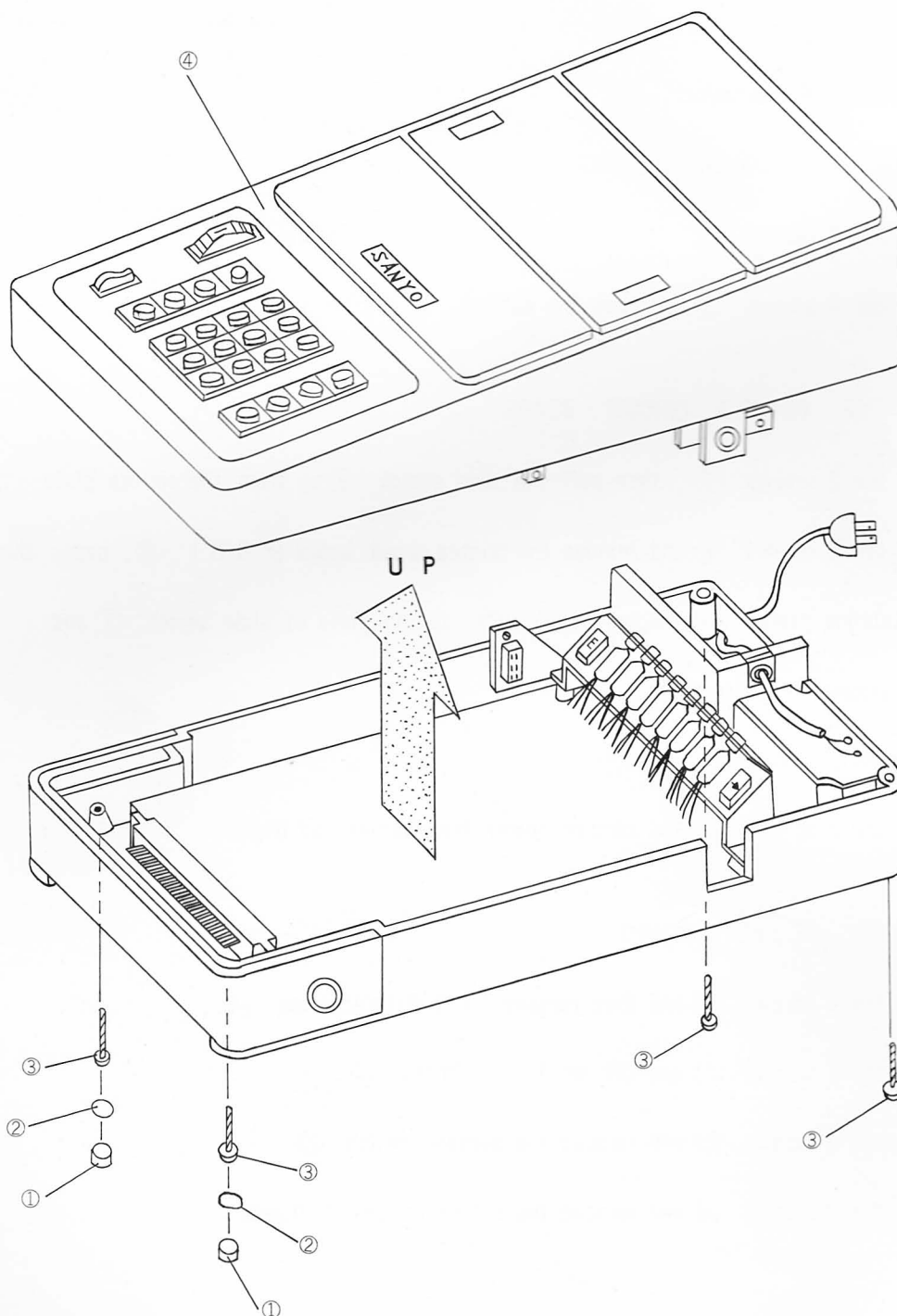


Fig-1

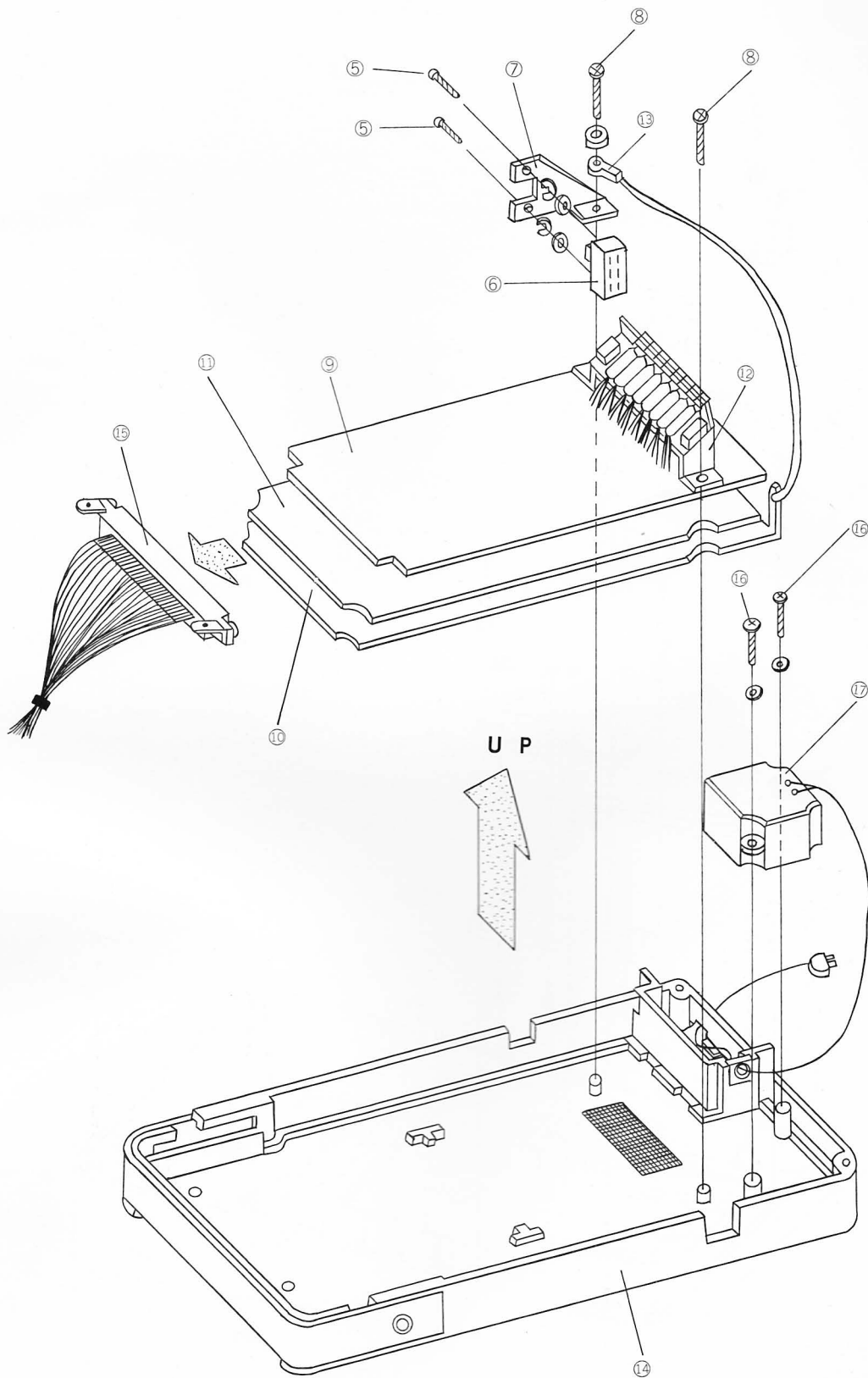


Fig-2

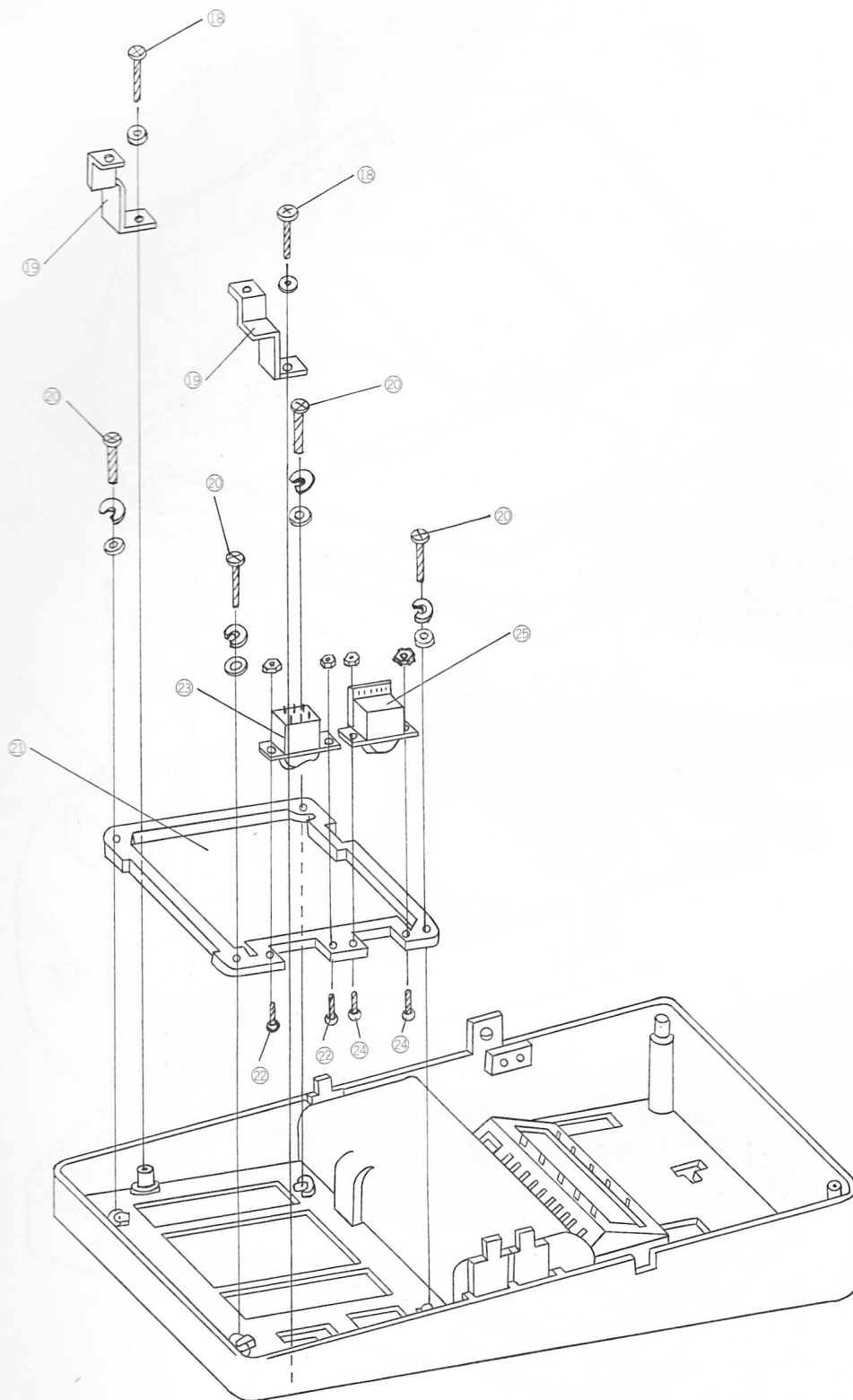


Fig-3



SANYO
SANYO ELECTRIC CO.,LTD.
INTERNATIONAL DIVISION: SANYO ELECTRIC TRADING CO.,LTD.
OSAKA, JAPAN