

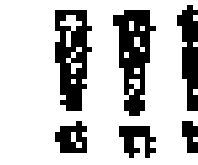
NIXDORF
COMPUTER

LK-3200

LANGUAGE MODULE
SPRACH-MODUL

ENGLISH-ESPAÑOL-
FRANÇAIS-DEUTSCH-
ITALIANO-ΕΛΛΗΝΙΚΑ

NIXDORF COMPUTER



(See page 13)

5. Press after setting a language combination to store the program in memory.

(Consulte la pagina 37 y 38)

5. Apriete para almacenar el programa en la memoria.

(Voir page 63 puis 64)

5. Pressez la touche pour stocker le programme dans la mémoire.

(Sie auf Seite 91 und 92)

5. Drücken Sie die Taste , um das Programm in den Speicher einzugeben.

(A pag. 119 e 120)

5. Premere per depositare il programma in memoria.

1 ENGLISH
25 ESPAÑOL
51 FRANÇAIS
79 DEUTSCH
107 ITALIANO
131 ΕΛΛΗΝΙΚΑ

1 CONTENTS

CONGRATULATIONS! As the owner of an LK-3000, you hold in your hand a remarkably versatile mini-computer. Translate foreign languages, do metric conversions, figure currency exchange values and more...with the switch of a module.

The LK-3200 Person-to Person module contains hundreds of words and phrases especially chosen to aid you in casual social conversation. As an added plus, this module allows your LK-3000 to translate in any combination of six languages: English, Spanish, French, German, Italian and Greek. For information on additional modules available for use with the LK-3000, see page 21 of this manual.

2

3 BASIC FEATURES OF THE LK-3000

9 KEY FUNCTIONS USED WITH THE LK-3200

11 USING THE LK-3200 PERSON-TO-PERSON MODULE

BEFORE YOU BEGIN	11
CHOOSING LANGUAGE COMBINATIONS	11
REVIEWING THE DICTIONARY	14
TRANSLATING A WORD	15
USING THE DICTIONARY FUNCTION....	17
BUILDING A SENTENCE	18

21 OTHER PRODUCTS

61 PRONUNCIATION GUIDE

3 BASIC FEATURES OF THE LK-3000

The LK-3000 comes in its own vinyl carrying case with room for two extra modules and instruction booklets.

POWER SOURCE

The LK-3000 operates on a built-in rechargeable battery which provides about four hours of continuous use when fully charged. The LK-3800 Adaptor/Charger has a ten-foot cord and operates on U.S. and international current (110/220 volts, 50-60Hz). You may need a simple plug adaptor to connect the Adaptor/Charger to electrical outlets in certain countries.

4

OPERATION

VOLTAGE SELECTION: Before using the LK-3800 Adaptor/Charger, be sure to set the voltage. Use a pen tip or small coin to move the recessed switch to 110 volt (U.S.) or 220 volt (Europe).

AC OPERATION: Connect the AC Adaptor/Charger to a wall outlet and to the LK-3000, then turn on the power switch.

BATTERY OPERATION: Disconnect the AC Adaptor/Charger. The battery provides about four hours of continuous use when fully charged.

BATTERY CHARGING: Connect the AC Adaptor/Charger to the LK-3000 and plug into a wall outlet, but leave the power switch OFF. The battery will recharge overnight. It cannot be overcharged.

PRECAUTIONS

- Always turn the power OFF before charging the battery or removing a module.
- Always be sure to select the correct voltage before using the AC Adaptor/Charger.

Failure to follow these precautions could result in serious damage to the LK-3000 and will void your warranty.

ENERGY-SAVING MODE

If you leave your LK-3000 on for more than thirty seconds without making an entry, the display will clear and a dot will travel across the screen. This indicates that the computer has gone into its energy-saving mode. Words that were displayed are automatically transferred to the temporary memory. To recall them, simply press `[def]`.

TECHNICAL SPECIFICATIONS

OPERATING TEMPERATURE: 0°C through 40°C.

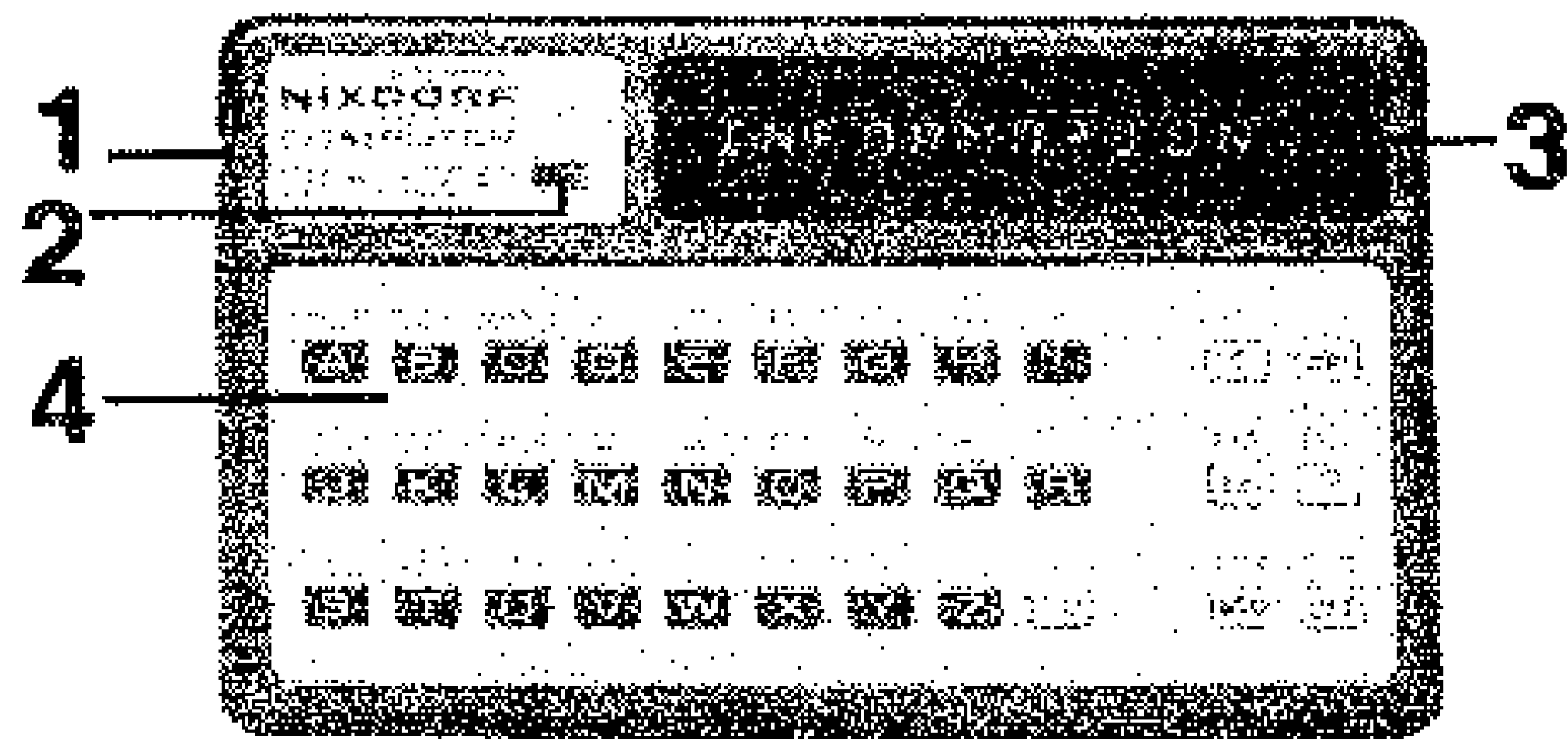
DIMENSIONS: 95.3mm deep by 156.3mm wide by 31.8mm high.

DISPLAY: 16 character, 16 segment alphanumeric light-emitting diode with integral MOS-LSI display controller.

POWER CONSUMPTION: 0.5 watt.

POWER SOURCE: DC, 500 milliamp-hour nickel cadmium rechargeable batteries. AC Adaptor/Charger will power the unit or recharge the batteries. 110 volt, 60Hz or 220 volt, 50Hz switch selectable. Use of any other Adaptor/Charger may damage the machine.

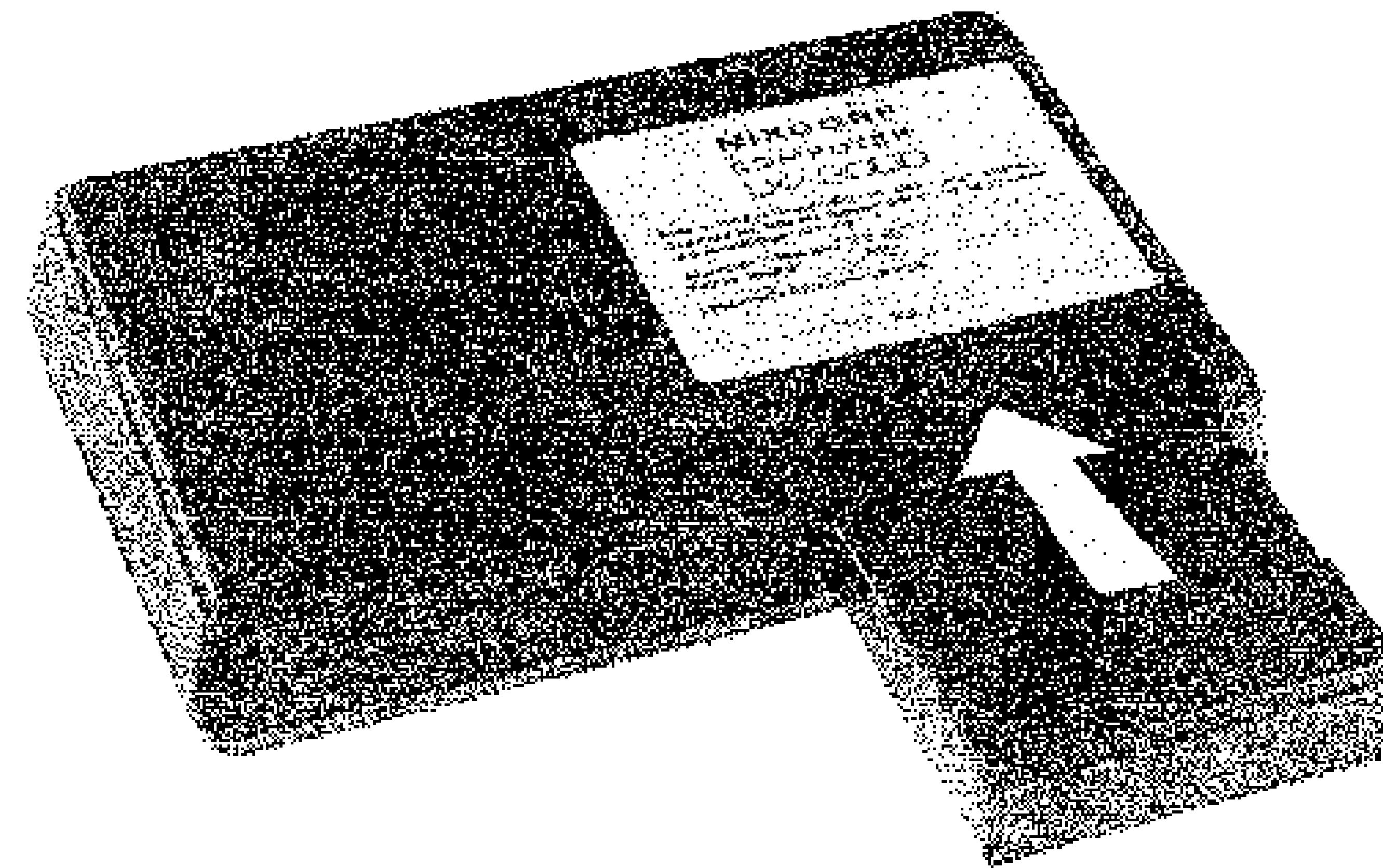
7



1. Connection for the AC Adaptor/Charger.
2. ON-OFF switch.
3. Alphanumeric Display with a sixteen character visual display capacity. Longer entries are stored in the LK-3000's temporary memory and can be recalled with the touch of a key.
4. Alphanumeric Keyboard allows you to enter words or numbers, depending upon the module being used.

8

INSERTING A MODULE



9 KEY FUNCTIONS USED WITH THE LK-3200

- f** Allows you to change the function of the LK-3200 module between any combination of six languages: English, Spanish, French, German, Italian and Greek.
- clr** Clears the temporary memory. Whenever this key is pushed, the function of the module will appear on the display.
- bs** Backspaces an entry one letter at a time so that you can correct errors in spelling. When the memory is cleared, pushing this key will reverse the direction of translation being used.
- ?** "Opens the dictionary" (permanent memory) of the LK-3200 module. Pressed in combination with any of the alphabetical keys, it quickly locates words and phrases. Press again and it translates them.

10

- stp** Enters words or phrases into the temporary memory so that you can build sentences. You may also use this key to move through the dictionary or instantly replay a translation one word or phrase at a time.
- def** Translates constructed sentences as well as words and phrases. The words entered and their translation will read out across the display from right to left. You may replay the translation as many times as you wish.
- sp** Enters a space between words on the display.

11 USING THE LK-3200 PERSON-TO-PERSON MODULE

BEFORE YOU BEGIN

The LK-3200 Person-to-Person module contains hundreds of socially-oriented words and phrases in six different languages. It is important to remember that words are programmed into the module in their simplest form. English verbs are first person singular, present tense. Foreign verbs are in their infinitive form, and most nouns are singular. For your convenience, many grammatically correct phrases such as "How are you?" and "Would you like to..." are included in the program. Use these whenever possible when you are building sentences. For further help, refer to the Pronunciation Guide on page 161.

CHOOSING LANGUAGE COMBINATIONS

Whenever you turn on your LK-3000 while using the Person-to-Person module, a combination of two languages will appear on the display. You can enter words in the language that appears on the left. Press **bs**. The order of the languages will

12

reverse. Now press **f**. This signals the LK-3000 that you wish to change its function. By pressing **stp** you can change the language in the first position on the display in this order: English-Spanish-French-German-Italian-Greek, and back to English. Now you are familiar with the basic keys used to change language combinations.

CHANGE FUNCTION TO ENGLISH-ITALIAN

1. Press **clr** and then **f**.
2. Press **stp** until ENGLISH appears on the left of the display.
3. Press **bs** to change the direction of translation and put English in the stable secondary position.
4. Press **stp** until ITALIAN appears in the first position.

ENGLISH SPANISH

SPANISH ENGLISH

ITALIAN ENGLISH

5. Press **bs** to put English in the first position.

ENGLISH ITALIAN

CHANGE FUNCTION TO GREEK-FRENCH

1. Press **clr** and then **f**.

2. Press **stp** until FRENCH appears in the first position.

FRENCH SPANISH

3. Press **bs** to put French in the secondary position.

SPANISH FRENCH

4. Press **stp** until GREEK appears.

GREEK FRENCH

Any combination of six languages may be found in this manner.

REVIEWING THE DICTIONARY

You will find it very helpful to review the vocabulary included in the LK-3200 module so that you are familiar with its words and can take fullest advantage of its pre-programmed phrases.

TO REVIEW THE DICTIONARY:

1. Press any letter of the alphabet.
2. Press the **?** key to "open the dictionary" (permanent memory) of the module. The first word or phrase beginning with that letter will appear.
3. Press **stp** to continue through the list of words.
4. If you wish to check the translation of any word without losing your place in the dictionary, press **?**. To continue through the dictionary, press **stp**.
5. When all words and phrases beginning with that letter have been displayed, NOT FOUND will appear.

15

TRANSLATING A WORD

For convenience, all exercises will be done ENGLISH-SPANISH.

EXAMPLE: PLEASE

1. Spell out PLEASE on the keyboard. (If you should misspell a word, use to backspace to the error and correct it.)

PLEASE

2. Press to open the dictionary. PLEASE will shift to the left on the display. This tells you the word "please" is included in the module's program.

PLEASE

16

3. Press again.

The Spanish translation will instantly appear. Or press to see the entered word and its translation.

POR FAVOR

Special Messages

If you enter a word and get SEARCHING on the display, it simply means the LK-3000 is scanning the module's program. As soon as the words entered are found, they will replace SEARCHING on the display.

If you get NOT FOUND, it means the word entered is not included in the module's program. Try another word that has a similar meaning.

Always press before beginning a new translation.

USING THE DICTIONARY FUNCTION

The dictionary function is a great time-saver when you want to quickly locate words or phrases.

EXAMPLE: GOOD EVENING

1. Instead of spelling out both words, enter the first two letters: GO

GO

2. Press . The first word found that begins with the letters GO will appear.

GO

3. Push until GOOD EVENING appears on the display.

GOOD EVENING

4. Push for the translation.

BUENAS NOCHES

The more letters you enter in STEP 1, the more you narrow down the list of words the dictionary will display. For instance, if you enter GOOD you will

get a list of words that begin with those letters: GOOD-BYE, GOOD MORNING... When all words in the program beginning with GOOD have been displayed, NOT FOUND will appear.

BUILDING A SENTENCE

Now that you are familiar with how the dictionary can work for you, it will be easy to make all kinds of sentences that will help you say Hello, Good-bye and everything in between.

EXAMPLE: I WOULD LIKE TO BUY YOU A DRINK.

1. Enter I WO. Be sure to put a space between I and W.

I WO

2. Press . The first words beginning I WO will appear. As soon as the phrase I WOULD LIKE TO appears on the display, it is entered into the temporary memory.

I WOULD LIKE TO

3. Enter BUY.

BUY

4. Press , and until BUY YOU A DRINK appears. It, too, is entered into the temporary memory.

BUY YOU A DRINK

5. Now press . The sentence you entered will move across the screen, followed by the Spanish translation: I WOULD LIKE TO BUY YOU A DRINK = ME GUSTARIA PAGARLE UNA COPA.

You may replay the translation as many times as you wish by pressing . Or press to instantly replay the translation a word or phrase at a time. (This is convenient if you wish to write a translation down.)

For short words it is easiest to simply spell them out and press to enter them into the temporary memory. The temporary memory will hold up to eight words or pre programmed phrases at a time. When full capacity has been reached, SENTENCE FULL will appear on the display. So if you have an exceptionally long sentence, you will have to translate it in sections.

Now you know everything you need to know to translate electronically. Remember, all functions in this manual can be done in any combination of the six languages. And with a little practice, you'll be translating on the LK-3000 like you've been doing it all your life.

21 OTHER PRODUCTS

Since the LK-3000 is basically a hand-held computer terminal, the real programming and permanent memory are included in the interchangeable modules. These modules allow you to change the function of the LK-3000 in seconds: for translation, for calculation, and much more...the possibilities are endless!

When you return your warranty card, we'll put you on our mailing list of Latest Developments which will keep you informed of new modules and attachments so you can keep your LK-3000 up-to-date.

The current library of modules includes:

22

BILINGUAL MODULES—up to 1500 useful words and phrases in English and its translations. Program contents help you find your way around, shop and talk to the natives. Modules available in:

LK-3050 ENGLISH-SPANISH
LK-3060 ENGLISH-FRENCH
LK-3070 ENGLISH-ITALIAN
LK-3080 ENGLISH-GERMAN
LK-3100 ENGLISH-POLISH
LK-3110 ENGLISH-PORTUGUESE
LK-3130 ENGLISH-GREEK

Modules soon to be available:

LK-3090 ENGLISH-SWEDISH
LK-3120 ENGLISH-RUSSIAN
LK-3140 ENGLISH-ARABIC
LK-3150 ENGLISH-HEBREW
LK-3160 ENGLISH-JAPANESE
LK-3170 ENGLISH-CHINESE

CALCULATOR MODULE—turns the LK-3000 into a five-function calculator with memory that also does metric conversions. Another special feature allows you to figure currency exchange values. Indispensable, at home or abroad.

LK-3900 CALCULATOR

OLYMPIC MODULES—contains records and statistics of Olympic events for the 1980 Games in Moscow and Lake Placid.

LK-0280 WINTER OLYMPICS-LAKE PLACID

LK-0680 SUMMER OLYMPICS-MOSCOW